

CERTIFICATE OF LOCATION OF GOVERNMENT CORNER

EAST QUARTER Corner of Section 23, Township 107 N, Range 40 W, 5 th. P.M.

STATE OF MINNESOTA, County of MURRAY

At the corner location shown on the sketch

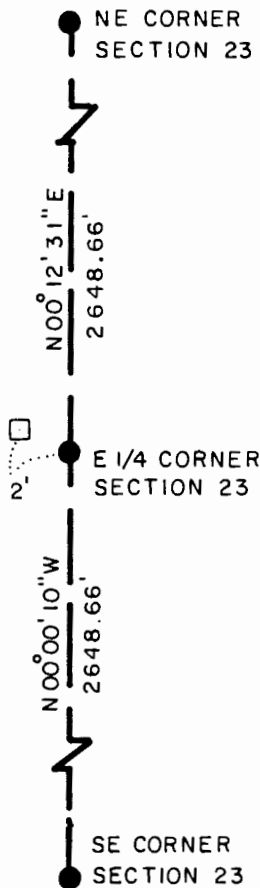
- On _____ found a _____
- left monument as found, lowered monument, removed monument (explain)
- On 5-23-91 placed a 3/4" x 24" REBAR WITH ALUMINUM CAP STAMPED
"DNR SURVEY MARKER", DOWN 1.0'

SKETCH OF REFERENCE TIES

NOTE: GOOD TIES NOT AVAILABLE



FOUND 11" x 23" x 14" CONCRETE FOOTING DOWN 1'



BEARINGS ARE IN COUNTY ORIENTATION

1983 MURRAY COUNTY COORDINATE SYSTEM
N = 176,690.919
E = 543,078.123

Statement of evidence relative to this corner location is on back of page

J.S.M. 6-27-91
WMA - 00618.00.00.01

I hereby certify that this document and the data contained herein was prepared by me or under my direct supervision.

Bruce W. Shuped 8-12-91
SIGNATURE DATE

Registration No. 17603

- Land Surveyor, Professional Engineer
- County Surveyor, County Engineer

OFFICE OF THE COUNTY RECORDER

County of MURRAY

I hereby certify that this document was filed in the Co. Recorders office of _____ M. on the _____ day of AUG 15 1991 A.D., 19 _____

County Recorder James V. Johnson

By _____, Deputy

DOCUMENT NO. _____

The DNR Bureau of Engineering contacted the following for survey information:

Secretary of State's Office
Murray County Recorder's Office and Highway Engineer's Office
Chicago and North Western Railway Office in St. Paul
Minnesota Department of Transportation Office in St. Paul

- 1861 U.S. General Land Office notes obtained from the Secretary of State's Office show the corner marked with pits and mound.
- 1898 Surveyor's Record Book A, page 77, obtained from the County Recorder's Office contains a survey by J. W. Woolstencraft. Survey shows a government mound, stake, and pits at corner. Survey also shows that an 8" by 8" by 20" stone was set at the center of Section 24. No distances are shown to corner.
- 1934 Surveyor's Record Book A, page 77, obtained from the County Recorder's Office contains corner information by F. A. March. A concrete stone is shown at corner but does not indicate if found or set. The following ties are shown to corner:
R.P. tack in fence post, north, 40.2 feet
8 feet north of the north rail of railroad track
- No Date A right-of-way map obtained from the Chicago and North Western Railway Office shows a north-south fence in area of corner and an angle from center line stationing to it. A description of what was found or set at corner is not given. The corner is shown:
north of the center line of railroad
within the railroad right-of-way
The map also shows the right-of-way to be 50' on each side of the center line.
- No Date A right-of-way map for Minnesota State Trunk Highway 30 obtained from Mn/DOT shows a north-south fence south of the area of corner with an angle from center line stationing to it. A description of what was found or set at corner is not given. The map also shows the center line 50' southerly of the southerly right-of-way of railroad.
- 1964 The DNR Bureau of Engineering found a concrete monument at corner. The following tie is shown to corner:
center line of railroad, south, 10 feet
- 1991 May, The DNR Bureau of Engineering found that all physical evidence of the railroad has been destroyed in area of corner. Located a north-south fence northerly of the area of the corner and also located the center line of Highway 30 in the area of the east line of Section 23. Computed a position for corner as follows:
in line with fence north
proportionally between the northeast and the southeast corners of Section 23
The computed position was found to be:
9.5 feet north of the computed location of the center line of railroad as determined from the center line of Highway 30
2648.66 feet from the northeast corner of Section 23
2648.66 feet from the northeast corner of Section 26

Dug a 3' by 3' by 30" deep hole the center being at the computed position for corner. Found an 11" diameter top by 23" diameter bottom by 14" high bell shaped piece of concrete down 1'. Were unable to find any markings on the piece of concrete. Disregarded the concrete as monumenting the location of the corner because no markings were found on it and its shape is not the same as the concrete monument found at the northeast corner of Section 26.

Visited the area of the center of Section 24 and located the intersection of a north-south fence and a field division east and found it to be:

12.0 feet north of a line between the east and west quarter corners of Section 24

3.1 feet west of a line between the north and south quarter corners of Section 24

Also searched for the record stone at the above intersection and at the computed position for the center of section and found numerous rocks and boulders.

Analysis of the above information led the DNR Bureau of Engineering to conclude that the computed position marks the location of the corner.